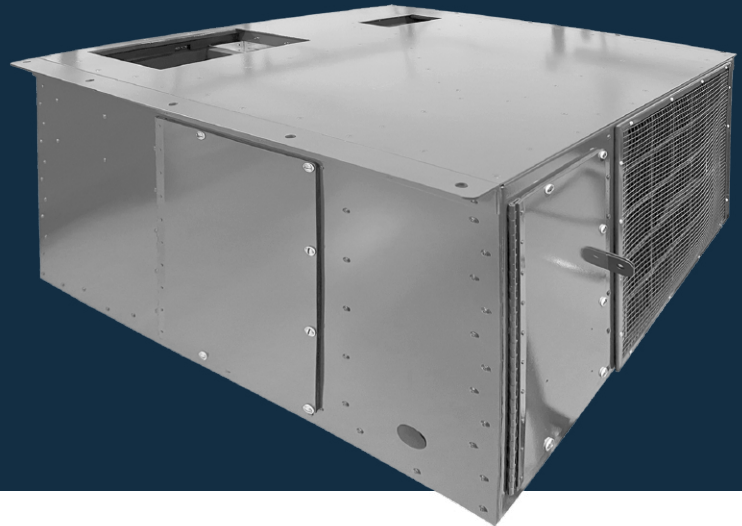


ENVIRONMENTAL CONTROL SYSTEM

Underslung environmental control system

/ Model
ECS-13H (2520)

MilAIR



/ 13,000 Btu/h
(3.81 kW)

Cooling Capacity

/ 140 °F
(60 °C)

Design Ambient Cooling

/ 140 °F
(60 °C)

Maximum Operating Ambient

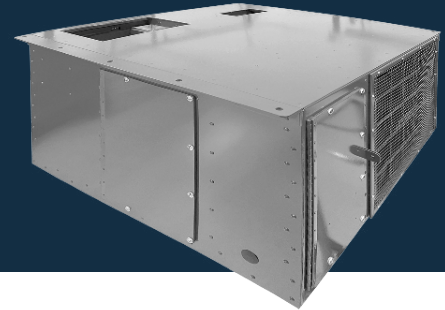
These units have been designed and tested for use on shelters, vans, and trailers that are subject to demanding transport and environmental conditions. All systems can be modified to meet your specific requirements.

MilAIR's standard product line of unitary externally mounted horizontal systems provide complete environmental control including cooling, heating, ventilation, dehumidification, and filtering.

Please contact sales@milairinc.com
for additional information and options.

Underslung environmental control system

/ Model
ECS-13H (2520)



Standard Features

- Sealed Motors
- Washable Return Air Filter
- Remote Power Monitor
- Local Control Panel
- Dehumidification
- External Refrigerant Access Valves
- External Refrigerant Sight Glass
- Hot Gas Bypass (HGB)
- All Aluminum Construction
- Coil Corrosion Protection

Options

- Finish to Specification
- PLC Touch Screen Remote Control Panel
- Fault Monitoring and Alarms (w/PLC)
- Manual Remote Control Panel
- Hour Meter
- Remote Control/Monitoring by Ethernet (w/PLC)

Characteristics

Refrigerant	R134a
Compressor	Hermetic Scroll Type
Evaporator Coil	Alum. Fin/Copper Tube
Condenser Coil	Alum. Micro-Channel
Circulating Fan	Motorized Impeller
Condenser Fan	Propeller
Size (H x W x D)	24.0" x 40.0" x 38.0" 61.0 cm x 101.6 cm x 96.5 cm
Frame & Panels	Aluminum
Weight	350 lbs. (125.8 kg)
Control Panel	Local (Off/Auto/Heat/Cool) Thermostat Temp Control

Performance

Cooling Capacity	13,000 Btu/h (3.81 kW)
Design Ambient Cooling	140 °F (60 °C)
Maximum Operating Ambient	140 °F (60 °C)
Minimum Ambient Cooling	40 °F (4.4 °C)
Design Return Air Temperature	80 °F (26.7 °C) db
Heating Capacity	25,932 Btu/h (7.6 kW)
Minimum Ambient Heating	-40 °F (-40 °C)
Supply Air Flow Rate	550 CFM (39.6 CMM)
Evaporator Static Pressure	.50 Inch Water

Electrical

Input Voltage	120/208 VAC
Number of Phases	3Φ
Frequency	50/60 Hz
Max Power Draw	7.6 kW (Heating)
Wires	4-Wire + GND
Control Power	120 VAC

Trusted Partner.

Horstman United States

44215 Phoenix Drive,
Sterling Heights, MI 48314

P +1 (586) 737-2100
E sales@milairinc.com

Details provided about the properties and usability of the products are purely for information purposes and do not constitute a guarantee of these characteristics. The extent of goods delivered is determined by the subject matter of the specific contract. No liability accepted for errors or omissions. Subject to technical alterations. © HORSTMAN 2023